

# emma's

P R O P E R T I E S



## 24 Lamprey Court, Birmingham, B37 7GB

Offers in excess of £120,000



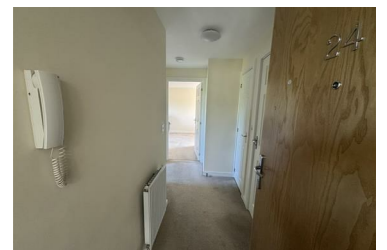
Emma's Properties are delighted to offer this beautifully presented One bedroom first floor flat.

Located within the popular and convenient area of Lamprey Court, Birmingham, B37.

Perfectly suited to first-time buyers, families, or investors, this property offers modern and comfortable living throughout. The accommodation briefly comprises a spacious lounge filled with natural light, a fitted kitchen with ample cupboard and worktop space, well-proportioned bedroom, and a contemporary family bathroom.

The property further benefits from double glazing, gas central heating, and allocated parking space.

Ideally positioned close to a range of local amenities, schools, shops, and transport links, the property also provides excellent access to Birmingham International Airport, the NEC, Birmingham Business Park, Jaguar Land Rover, the upcoming HS2 interchange station, and major motorway networks



emma's  
P R O P E R T I E S