

emma's

P R O P E R T I E S



15 Goodwood Close, Birmingham, B36 8QB

Offers in excess of £130,000

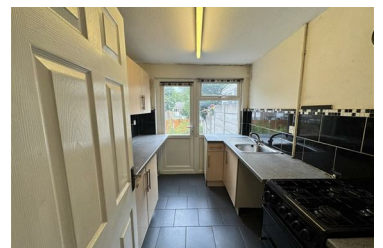


Emma's Properties are pleased to present this three-bedroom semi-detached home, located in a quiet cul-de-sac in a sought-after part of B36. Offering spacious accommodation and excellent potential, this property is ideal for investors or buyers looking for a project.

The property benefits from a garage conversion, providing additional living space with the potential to be used as a fourth bedroom, home office, or playroom. The ground floor also includes a generous lounge, kitchen, and dining area with access to the rear garden. Upstairs, there are three well-proportioned bedrooms and a family bathroom.

Please note: The property requires full renovation, including attention to a damp issue, which has been reflected in the asking price. This is a fantastic opportunity to add value through refurbishment and modernisation.

More photos available on request.



- Chain Free
- Great Investment
- Renovation Project
- Garage Conversion

emma's

P R O P E R T I E S