

emma's

P R O P E R T I E S



10 Lichfield Road, Birmingham, B46 1EG

Offers in excess of £160,000



Situated on the popular Lichfield Road in the desirable town of Coleshill, this well-presented first floor flat offers spacious living and excellent transport links to Birmingham and beyond – perfect for professionals, couples, or small families.

The flat enjoys plenty of natural light throughout, and its generous room sizes make it feel bright, open, and welcoming.

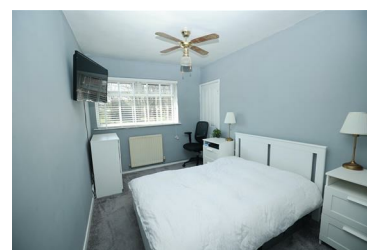
In Brief:

Private entrance with stairs leading to a central hallway

Generous living area with large window, flowing through to a bright modern Kitchen

Two double bedrooms

- Great Investment Oppurnitiy
- Spacious
- First Floor Flat
- Great Location
- Two Bedrooms



emma's
P R O P E R T I E S