

emma's

P R O P E R T I E S



43 Dovercourt Road, Birmingham, B26 3RB

£1,100 Per month



Emma's Properties are delighted to present this well-maintained two-bedroom house available to rent in a popular and convenient location.

This lovely home offers a bright and spacious living area, a modern kitchen, two well-proportioned bedrooms, and a family bathroom. The property benefits from off-road parking and a generous rear garden.

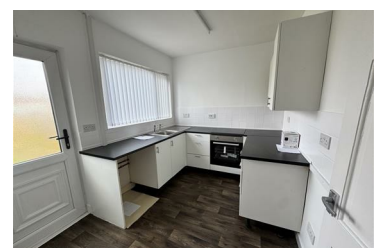
Situated close to local amenities, schools, and excellent transport links, this property is ideal for couples, small families, or professionals.

Key Features:

Two good-sized bedrooms

Spacious rear garden

- Two good-sized bedrooms
- Off-road parking
- Spacious rear garden
- Convenient location



emma's
P R O P E R T I E S

4 Rectory Lane, Rectory Lane, Birmingham, B36 9DH

Tel: 01217 944916

Email: Emma@emmasproperties.co.uk