

emma's

P R O P E R T I E S



31 Dale Park Avenue, Kilburn, DE56 0PR

£1,100 Per month



Welcome to this four bedroom detached home, ideally situated on the highly sought-after Dale Park Avenue in Kilburn. Offering generous living space and excellent local amenities, this property is perfect for families or professionals seeking a well-connected yet peaceful location.

Key Features:

Spacious living room

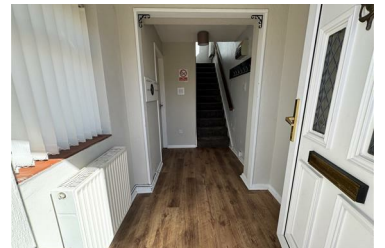
Fitted kitchen/dining area

Four well-proportioned bedrooms

Two family bathrooms

- Four Bedrooms
- Two Family Bathrooms

- Two Reception Rooms
- Kitchen - Dining Room



emma's
P R O P E R T I E S