

emma's

P R O P E R T I E S



20 Tulip Walk, Birmingham, B37 7NT

Offers in the region of £100,000



Emma's Properties is delighted to present this well-maintained one-bedroom maisonette, perfect for first-time buyers or investors. Situated in the heart of Chelmsley Wood.

Property Features:

Living Space: A spacious and inviting lounge area, with space for dining.

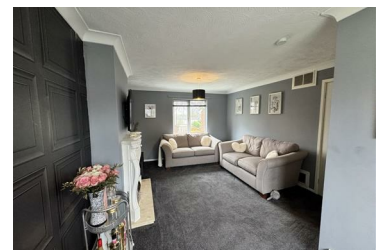
Kitchen: Fitted with modern units and ample storage.

Bedroom: A generously sized double bedroom

Bathroom: Equipped with a contemporary suite, including a bathtub with overhead shower, washbasin, and WC. Equipped with a secure intercom access system.

Local Amenities:

Shopping and Dining: The property is conveniently located near Chelmsley Wood Shopping Centre, offering a variety of retail stores, supermarkets, and



- One Bedroom Flat
- First Floor
- Secure intercom access system.

emma's
P R O P E R T I E S