

emma's

P R O P E R T I E S



5 Camden Close, Birmingham, B36 9BY
Offers in the region of £300,000



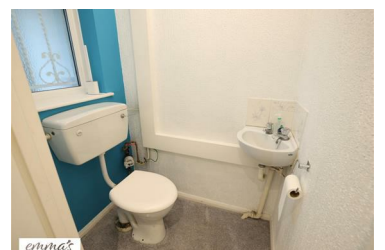
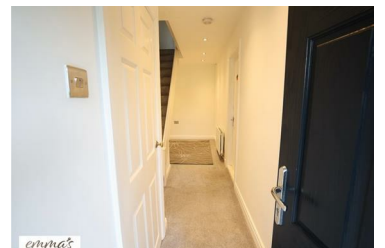
Welcome to 5 Camden Close.

This Property is situated in the ever popular area of Castle Bromwich - Camden Close and has No Upwards Chain!

Ground Floor:
Entrance hall
Guest toilet
Converted garage/living space

First Floor:
Bright living room with large window
Kitchen/diner

- NO UPWARD CHAIN
- Converted garage/ Living space
- Desirable Location
- Guest W.C
- Private Rear Garden
- Not To Be Missed!



emma's
P R O P E R T I E S