

emma's

P R O P E R T I E S



51 Sheppey Drive, Birmingham, B36 0LZ

Offers in the region of £180,000



CHAIN FREE!

Welcome to 51 Sheppey Drive.

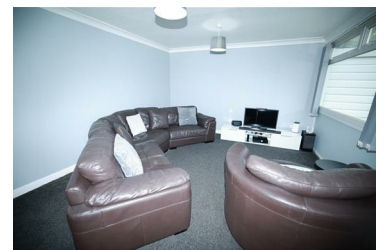
This beautifully maintained three-bedroom terraced home is perfect for families or first-time buyers.

Situated in a quiet, residential area, 51 Sheppey Drive offers both comfort and convenience.

Key Features:

Spacious open plan living room with plenty of natural light
Modern kitchen with ample storage and worktop space
Three generously sized bedrooms

- CHAIN FREE!
- Perfect For First Time Buyers Or An Investment Opportunity.
- Great Location
- Three Spacious Bedrooms



emma's
P R O P E R T I E S