

emma's

P R O P E R T I E S



64 Wheatcroft Drive, Chelmsley Wood, Solihull,, B37 7LN
Offers in excess of £160,000



This two-bedroom terraced house at 64 Wheatcroft Drive is perfect for first-time buyers or investors. Situated in a well-connected area, it's conveniently close to local schools including WMG Academy for Young Engineers, and has easy access to transport links like Marston Green Station. Its location also offers great transport links to the M6, M42 and the upcoming HS2.

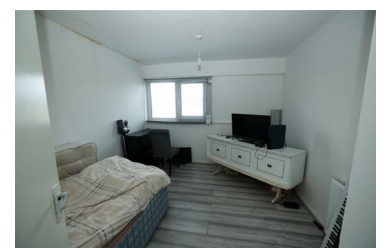
The property provides ample potential for those willing to put in some work to create their ideal home or increase their portfolio.

Property Features:

- Spacious Living area with access to the rear garden
- Fitted Kitchen with space for a dining table
- Two Bedrooms
- Bathroom with shower cubical, pedal stool hand wash basin & separate W.C
- Spacious rear garden

Do you have a property to sell or let? Contact Emma's Properties for a free Valuation!

- Two Bedrooms
- Investment Opportunity
- Spacious Rear Garden



emma's
P R O P E R T I E S