

emma's

P R O P E R T I E S



5 Chattle Hill, Lichfield Road, Coleshill, B46 1LB
By auction £225,000



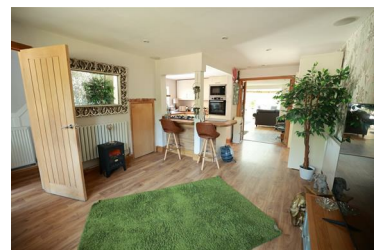
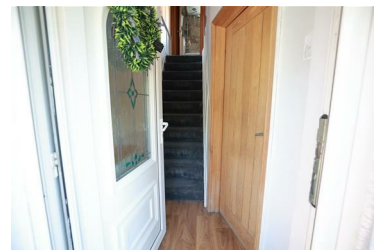
Welcome to Chattle Hill, Lichfield Road.

Being sold via Secure Sale online bidding. Terms & Conditions apply. Starting Bid £225,000. This property will be legally prepared enabling any interested buyer to secure the property immediately once their bid/offer has been accepted. Ultimately a transparent process which provides speed, security and certainty for all parties.

Nestled in the serene neighbourhood of Chattle Hill, this delightful 3-bedroom semi-detached house offers a perfect blend of modern living and classic charm. As you step inside, you are greeted by a warm and inviting living room featuring a lovely fireplace, perfect for those cosy evenings.

The modern kitchen, complete with high-quality appliances and ample storage, flows seamlessly into a bright dining area, creating an ideal space for family meals and entertaining guests. Upstairs, you will find two double bedrooms and a box room (currently used as a walk in wardrobe) each tastefully decorated and flooded with natural light, alongside a modern family bathroom.

- Immediate Exchange Of Contract ■ Sold Via Secure Sale Available.



emma's
P R O P E R T I E S