

emma's

P R O P E R T I E S



9 Elford Grove, Birmingham, B37 7RN

Offers in excess of £210,000



Emma's is pleased to offer this two bedroom, well presented terraced house for sale in B37

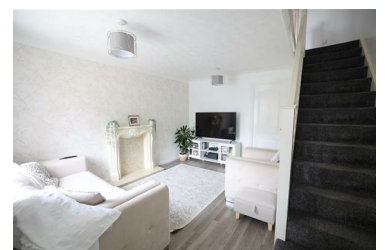
CHAIN FREE!

Located in a popular residential cul-de-sac in Marson Green - Elford Grove and convenient for schools, shops and access to the Airport, NEC, M42 and M6.

The property comprises of: Entrance porch, lounge area and a modern kitchen/dining room with patio doors opening onto the low maintenance rear garden with artificial grass.

Stairs giving access to the first floor and comprises of; landing, one double bedroom, an ample second bedroom and a bathroom including; walk-in shower, draw unit hand wash basin and W.C.

- CHAIN FREE!
- Two Good Sized Bedrooms
- Modern Two Bedroom House
- Spacious Lounge
- Allocated Parking To Front



emma's
P R O P E R T I E S