

emma's

P R O P E R T I E S



12 Bentley Court, Birmingham, B36 9LZ

Offers in the region of £390,000



Emma's is pleased to offer this extended, modern, freehold detached house for sale B36

Situated on Bently court, Castle Bromwich.

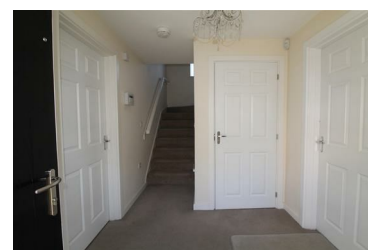
Approach - Canopy porch entrance, Garage and additional space for multiple vehicles.

Entrance hall gives access to; Guests Cloakroom, family sized living area, Spacious kitchen/Diner with utility room extension (with power supply for whitegoods) bi-fold doors to the small low maintenance rear garden.

Kitchen - Base and wall units and work surfaces, stainless steel sink, built in oven and hob, cooker hood and extractor fan.

Utility room with power supply for white goods, hot/cold-water drain, spacious storeroom, two skylight windows to dining area and bi-folds to rear garden.

- Four Bedroom's
- Rainwater Harvest System Plus
- Security Alarm
- Spacious Kitchen Diner With Utility
- Extended
- Garage & Addittional Off Road Parking



emma's
P R O P E R T I E S