

emma's

P R O P E R T I E S



22 Avon Drive, Birmingham, B36 0TR

Offers in excess of £185,000



For Sale B36

Perfect for a first family home or a buy to let investment.

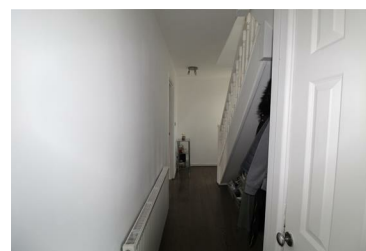
This family home consists of; A beautifully presented, modern kitchen, living area through to the conservatory, 3 bedrooms and a family bathroom.

On approach to the property you are greeted with a front garden, small porch area and hallway giving access to;

A spacious living area leading through to the conservatory, and a beautifully presented, modern fitted kitchen. The fitted kitchen is spacious with plenty of room for a dining table and gives access to the low maintenance rear garden.

Stairs giving access to; one double bedroom and two generously sized single bedrooms, family bathroom including; bath with mixer tap, shower cubical,

- Freehold
- Front & Rear Garden
- Great Location
- Three Bedroom's
- Modern Kitchen
- Excellent Transport Links



emma's
P R O P E R T I E S

4 Rectory Lane, Rectory Lane, Birmingham, B36 9DH

Tel: 01217 944916

Email: Emma@emmasproperties.co.uk